

USER MANUAL

XML MODULE-VER1.0

18th LIVESTOCK CENSUS 2007

User Manual

Computerization of 18th Livestock Census 2007

For States

Software Developed by:

Animal Production & Health Informatics Division
National Informatics Centre
Department of Information Technology
Ministry of Communications & Information Technology
Government of India
436, Krishi Bhawan, New Delhi - 110145
Telephone: - 23388630, E-mail:- sanjay 15@nic.in

User Manual
NIC-APHID-LC-XML-UM

In Association With

Animal Husbandry Statistics Division
Department of Animal Husbandry Dairying & Fisheries
Ministry of Agriculture, Government of India
DMS Complex, Shadipur Depot, New Delhi - 110008
Tel: 25873773, Fax: 25873772, E-mail:- advisorstat@gmail.com,
18livestock07@gmail.com

December 2010

**No part of this document should be reproduced or modified
without the prior permission of National Informatics Centre**

Document Information

Title	XML MODULE-VER1.0 18th LIVESTOCK CENSUS 2007 User Manual Computerization of 18th Livestock Census 2007
Document ID	NIC-APHID-LC2008
Author(s)	Mr. Sanjay Sharma, Scientist "D", NIC
Reviewer(s)	Dr. A.K.Choubey, Senior Technical Director, NIC
Team Name	NIC-APHID
Team Members	Dr. A.K. Choubey, Mr. Naveen Kumar, Mr.Sanjay Sharma Scientist "D"
Project Mentors	Mr. M. Moni , Deputy Director General , NIC
Editor	Mr. Sanjay Sharma, Scientist "D", NIC
Type of Report	SDLC Document-Managerial
Software Used	MS Word/Office XP
Templates Used	IEEE,std1063-1987
Style guide	NIC QMS Style Guide

Document Overview

This document constitutes a formal statement of the USER MANUAL for DATA ENTRY SOFTWARE (Quick Results Module) Computerization of 18th Livestock Census 2007. This document meets the QMS requirements of NIC.

Pre requisities:-

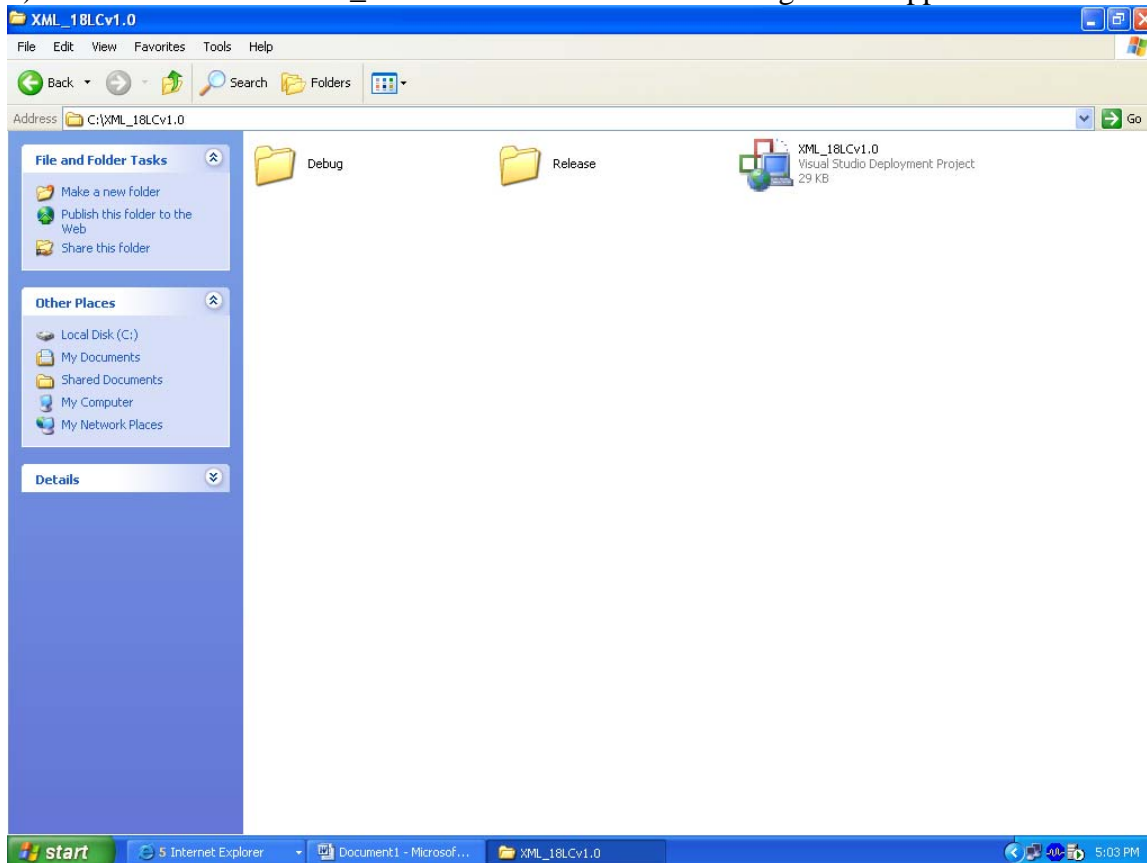
1. Name of the machine is Serverdadf - no need to change if already exist.
2. .NET Framework- 2.0.50727 (can be freely downloaded from <http://www.microsoft.com> or many other web sites)
3. SQL Server database Lstockhh-**Don't Touch if present**¹ or download blank database for new data entries from: - http://dahd.nic.in/livestocksoftwaredetail/Lstockhh_backup.rar.
4. Temporary database Temp_Lstockhh - download it from http://dahd.nic.in/livestocksoftwareDetail/Temp_LStockhh.rar
5. Software – download it from - http://dahd.nic.in/livestocksoftwareDetail/XML_18LCv1.0.rar
6. Manual for using the software in pdf format, download if from [http://dahd.nic.in/livestocksoftwaredetail/XML_MODULE_LC_version\(1.o\).doc](http://dahd.nic.in/livestocksoftwaredetail/XML_MODULE_LC_version(1.o).doc)
6. Manual for using the software in doc format, download it from [http://dahd.nic.in/livestocksoftwaredetail/XML_MODULE_LC_version\(1.o\).doc](http://dahd.nic.in/livestocksoftwaredetail/XML_MODULE_LC_version(1.o).doc)

¹Caution :- Do not install blank database if data entry has been started or done. If installed, all data will be lost. Blank database is needed in case of new data entry.

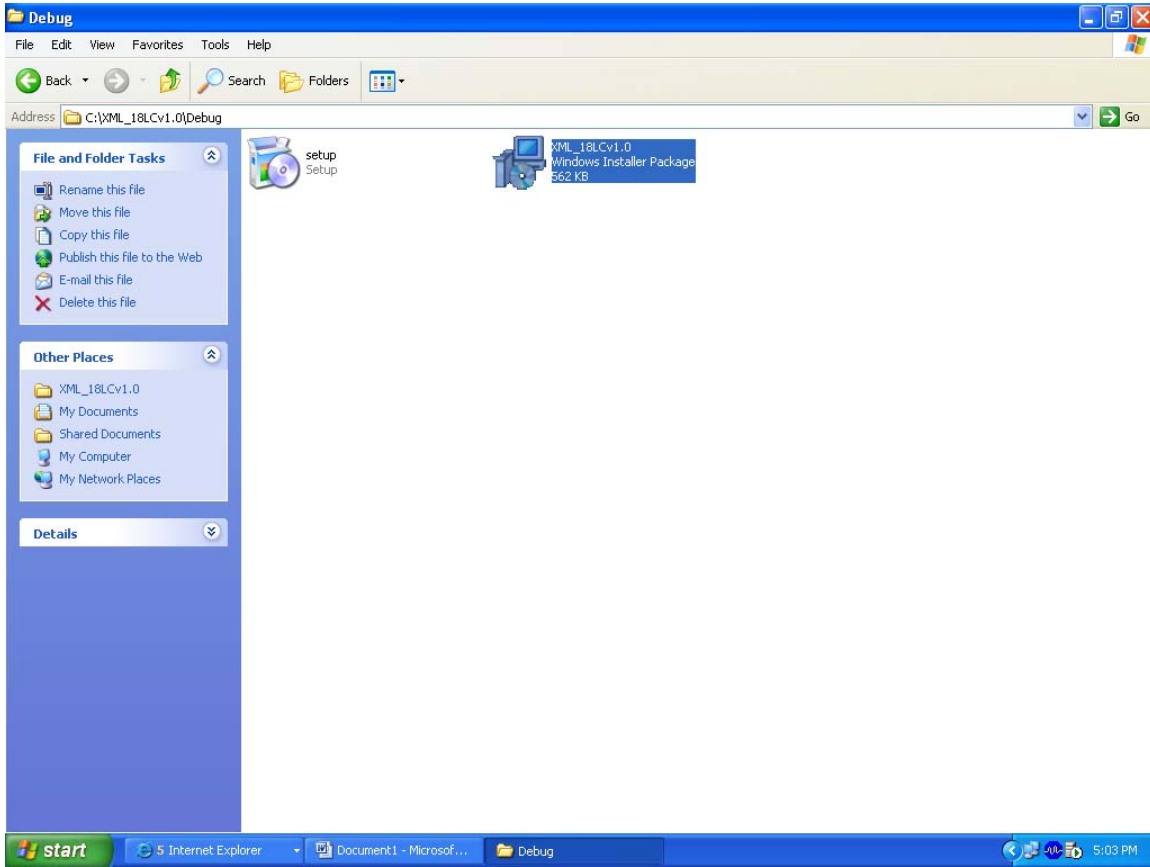
Installation Process of Software

1) Download the software from <http://dahd.nic.in/Lstock.htm> under the heading “XML Module ver1.0, incorporating Generating/Validations/Verifications/Restorations/Merging XML files of Quick/Village and Detailed/Household module” or copy it from CD.

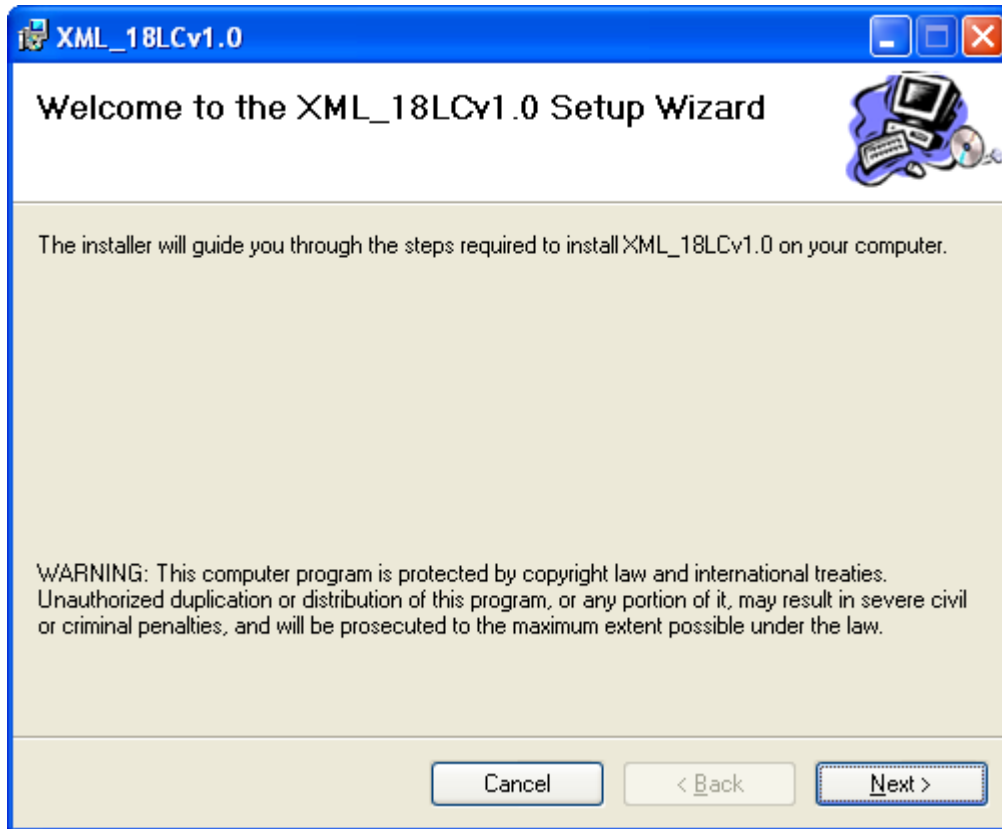
2) Double click the “XML_18LCv1.0” folder .The following screen appears



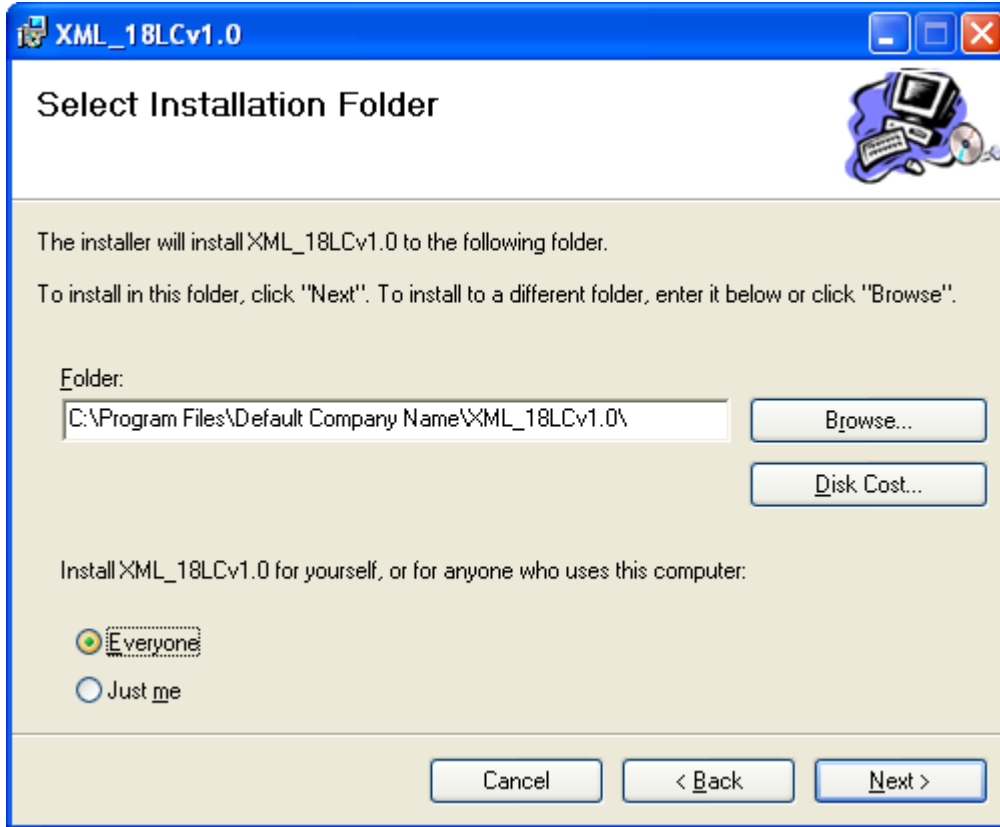
3) Then double click the debug folder. The following screen appears:



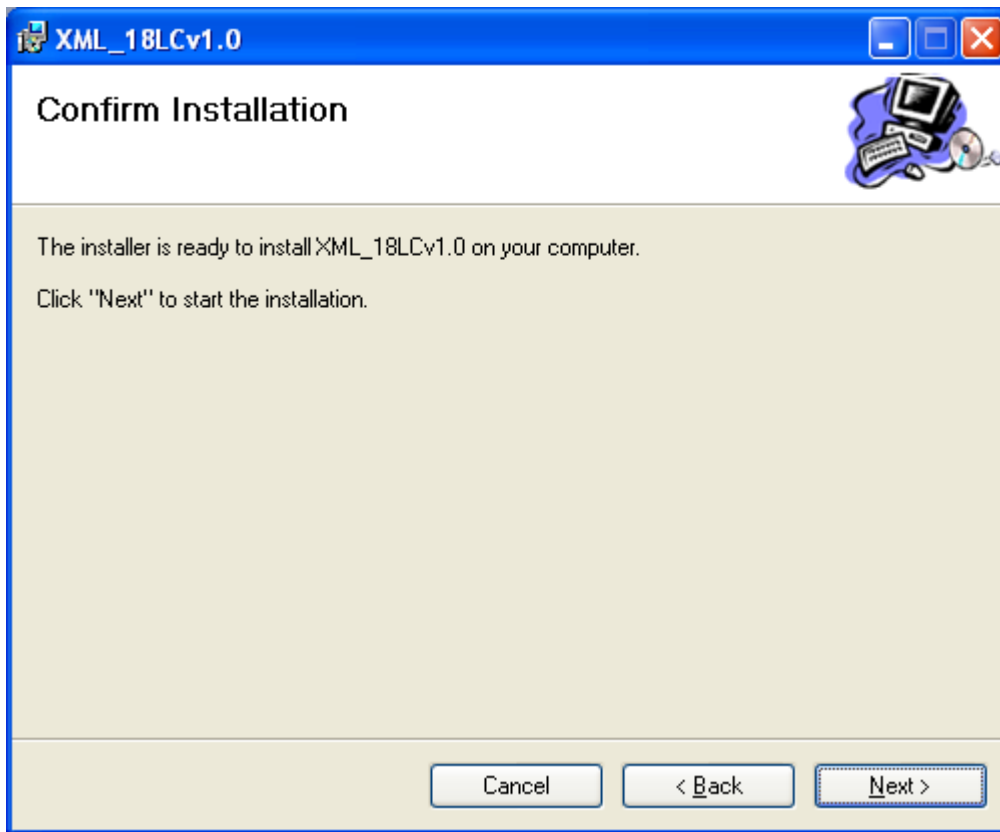
4) You will find the **setup.exe** folder. Click that folder in order to install the software. When you double click the setup.exe the following screen is displayed



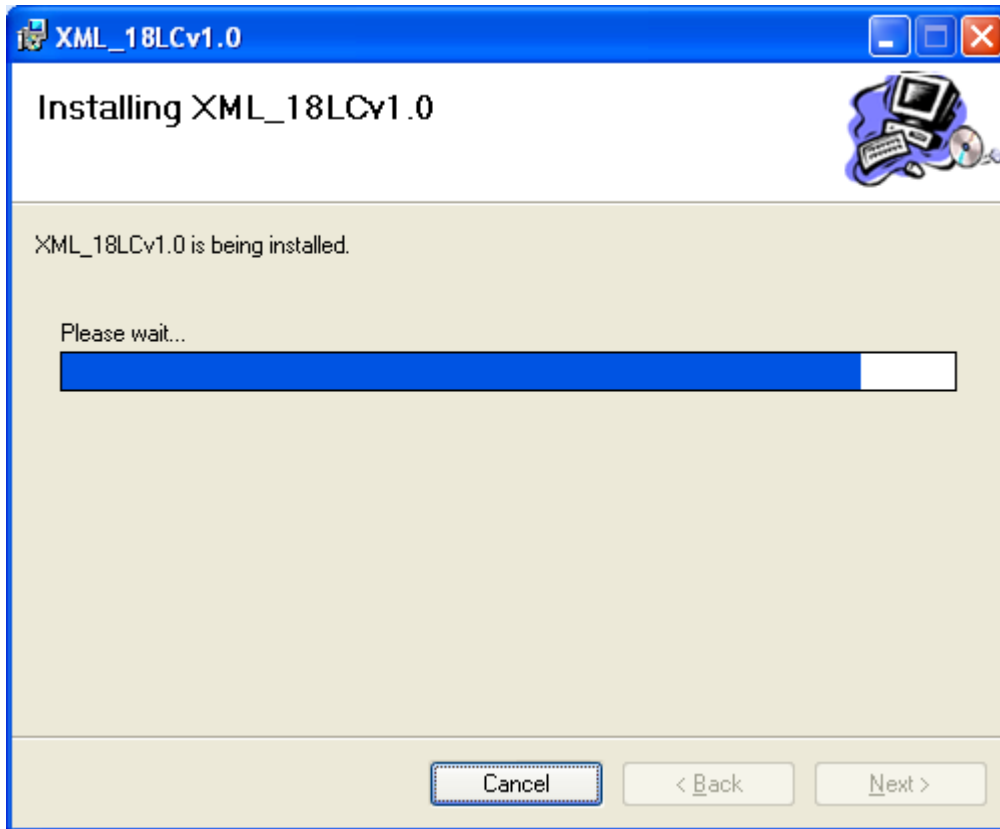
5) Then click "Next" button. The following screen is displayed:



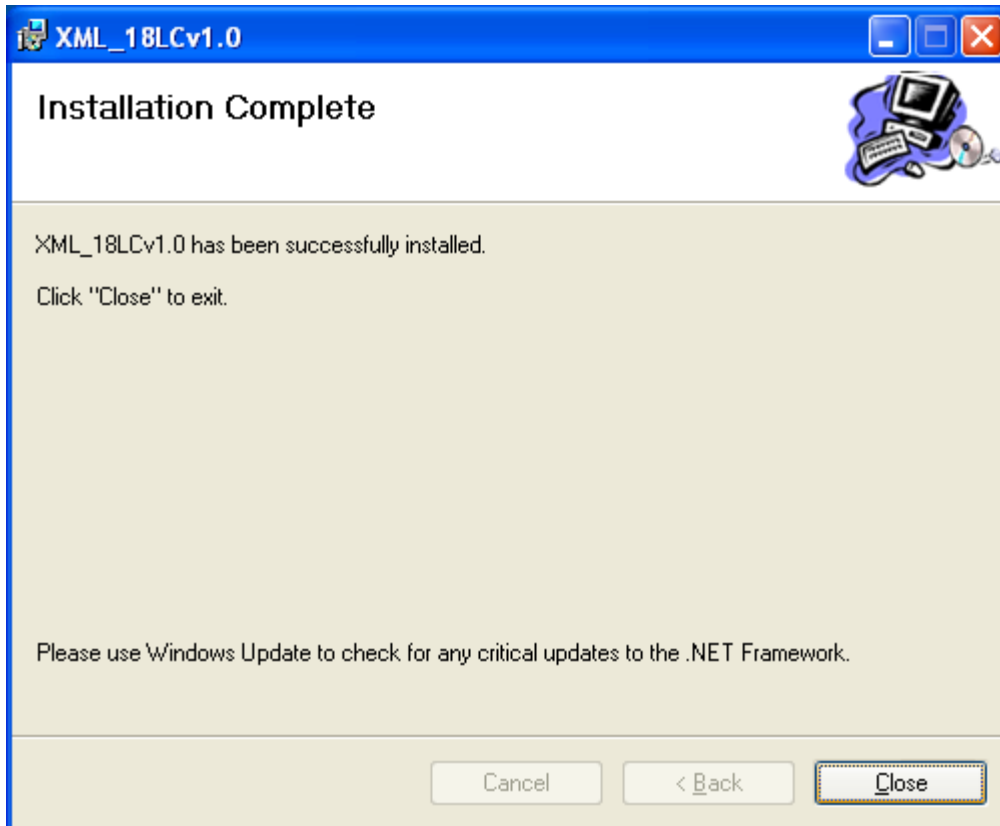
6) Then click “**Next**” button for further processing. The following screen is displayed. It will ask you to confirm your installation.



7) Then click **next** to start the installation. The following screen is displayed:

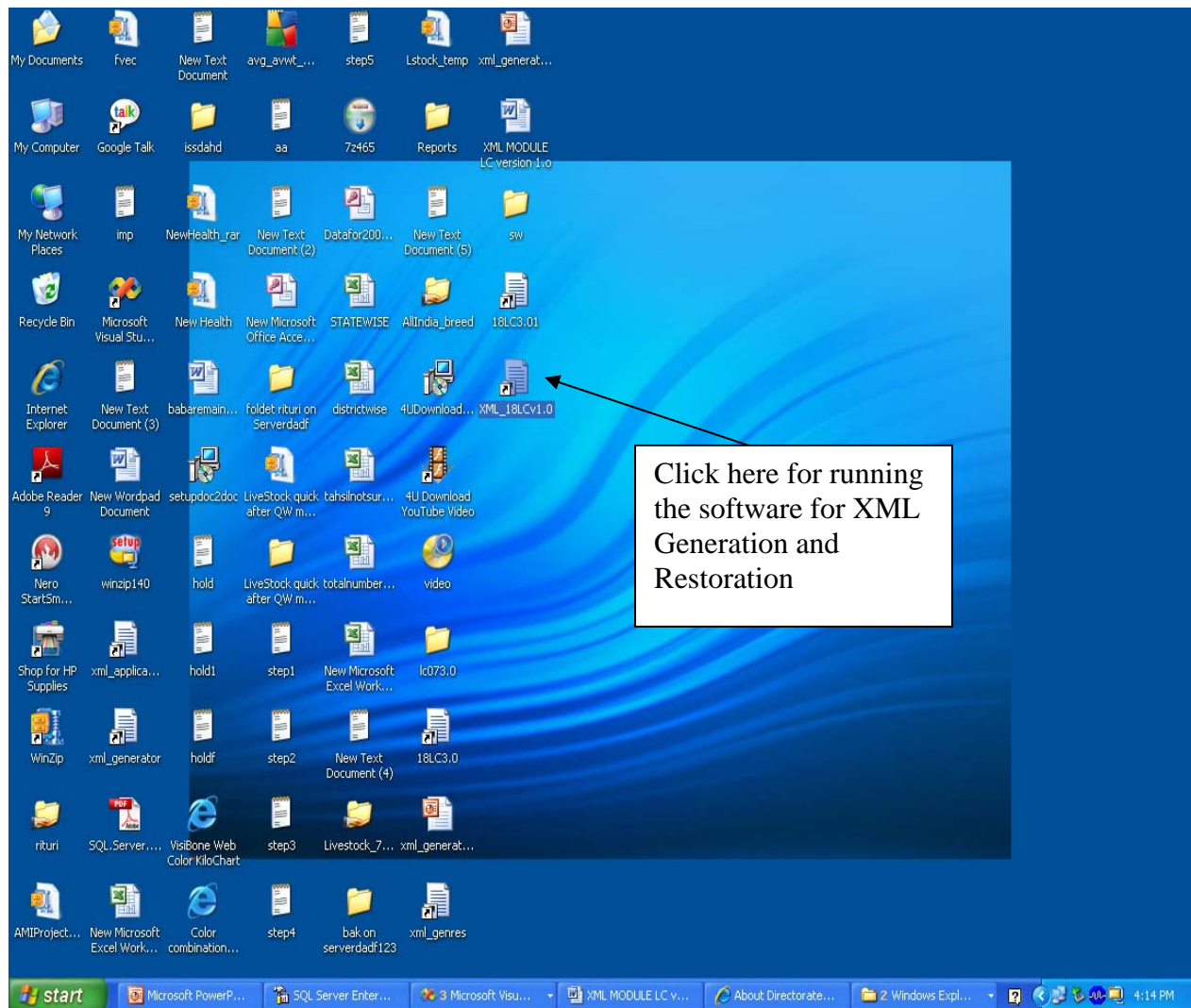


8) Finally click “close” button to complete the installation.

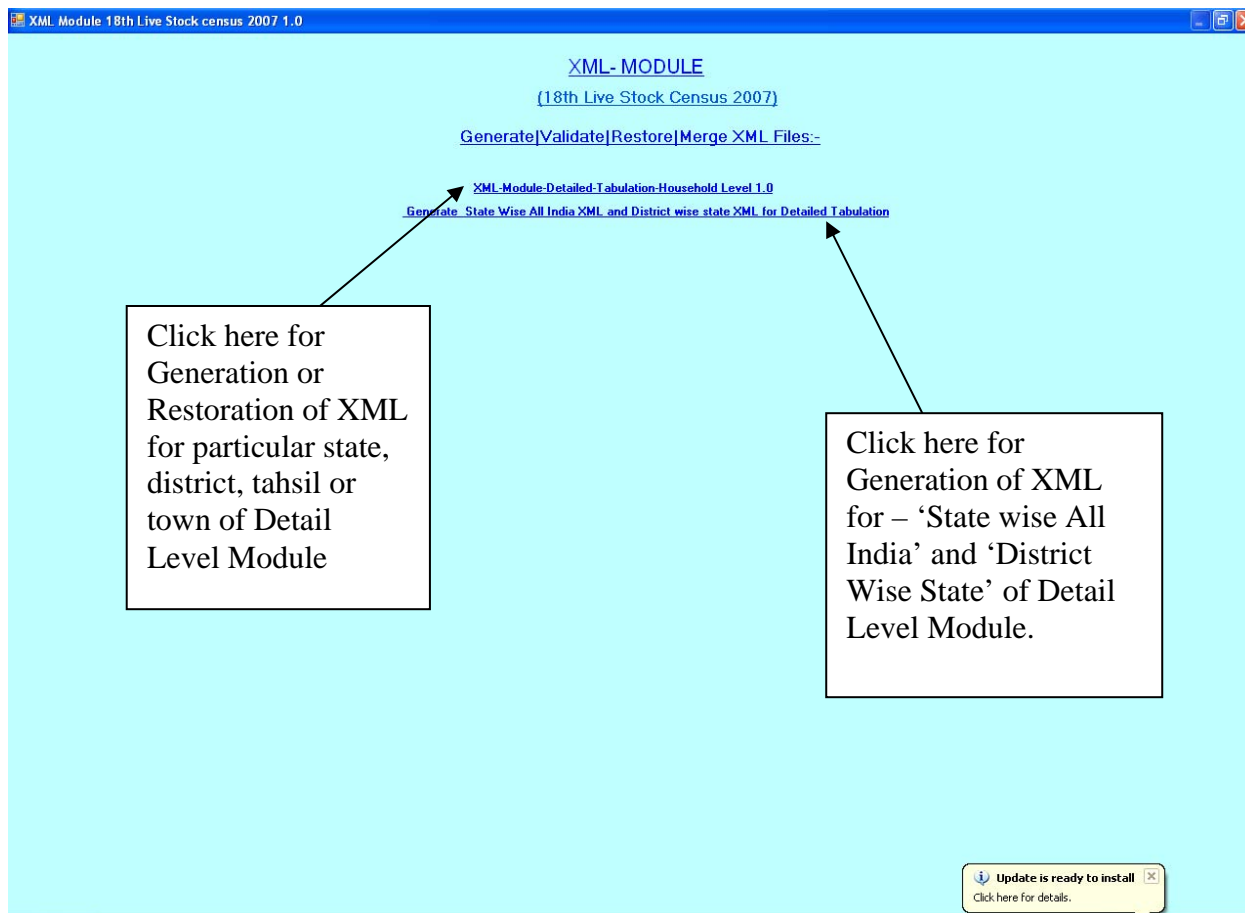


Working of the Software

1) Now the XML software is installed and you can see the “XML_18LCv1.0” shortcut on the desktop from where you can start your XML Module of 18th livestock census as:



2) Double click the shortcut on Desktop. The following screen is displayed:

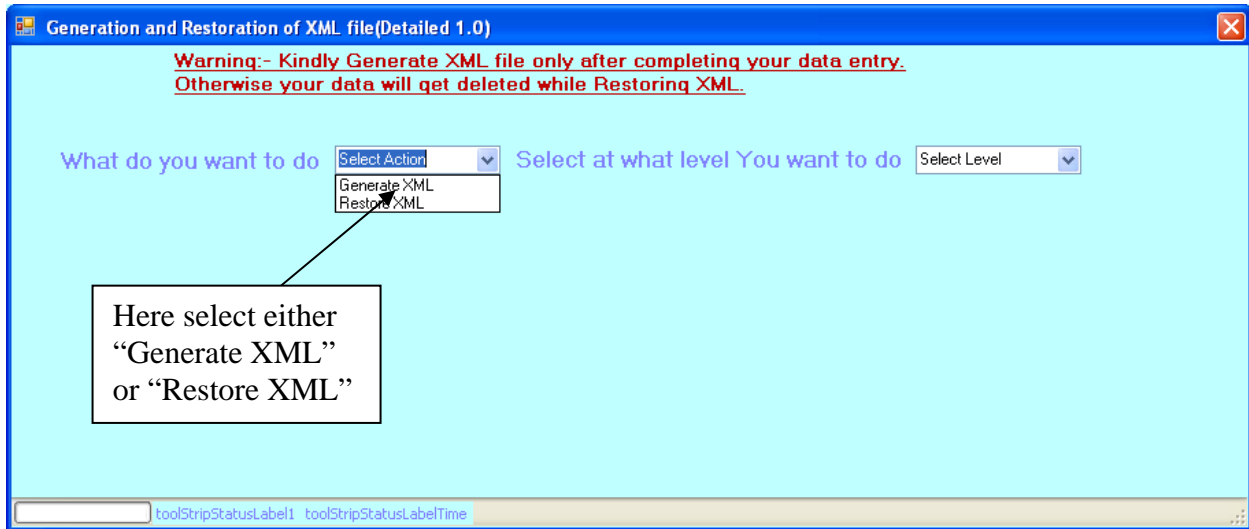


There are two links in the above form with following names:-

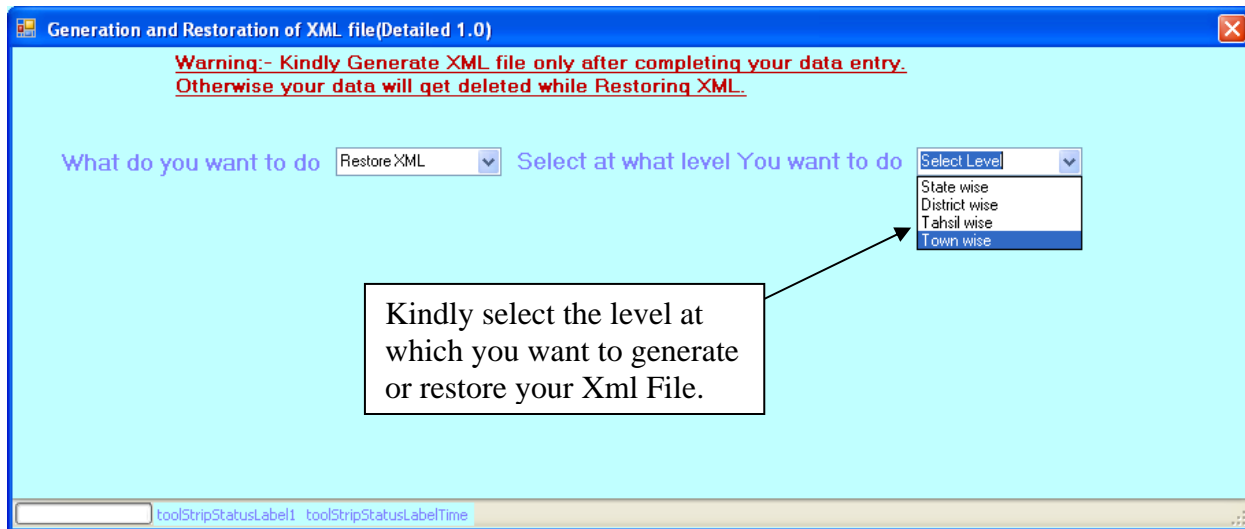
1. **XML-Module-Detailed Tabulation-Household Level 1.0** – Use if you want to *generate or restore* XML file for particular state, district, tahsil or town of Detail Level Module – household data .
2. **Generate “State Wise All India XML” and “District wise state XML” for Detailed Tabulation** – Use if you want to *generate* XML for “All India” (For all 35 states) or XML for ‘All Districts’ (present in a particular state) of Detail Level Module – household data.

* Click at any one link

3) After clicking button “**XML-Module-Detailed Tabulation-Household Level 1.0**” following screen will appear:-



4) After selecting “Generate XML” or “Restore XML” we have an option to generate or restore xml files at different levels which is given as:-



Please select the appropriate Option, accordingly where you are working

- If you are working at **State level** kindly select “**State Wise**” option
- If you are working at **District level** kindly select “**District Wise**” option
- If you are working at **Tahsil level** kindly select “**Tahsil Wise**” option
- If you are working at **Town level** kindly select “**Town Wise**” option

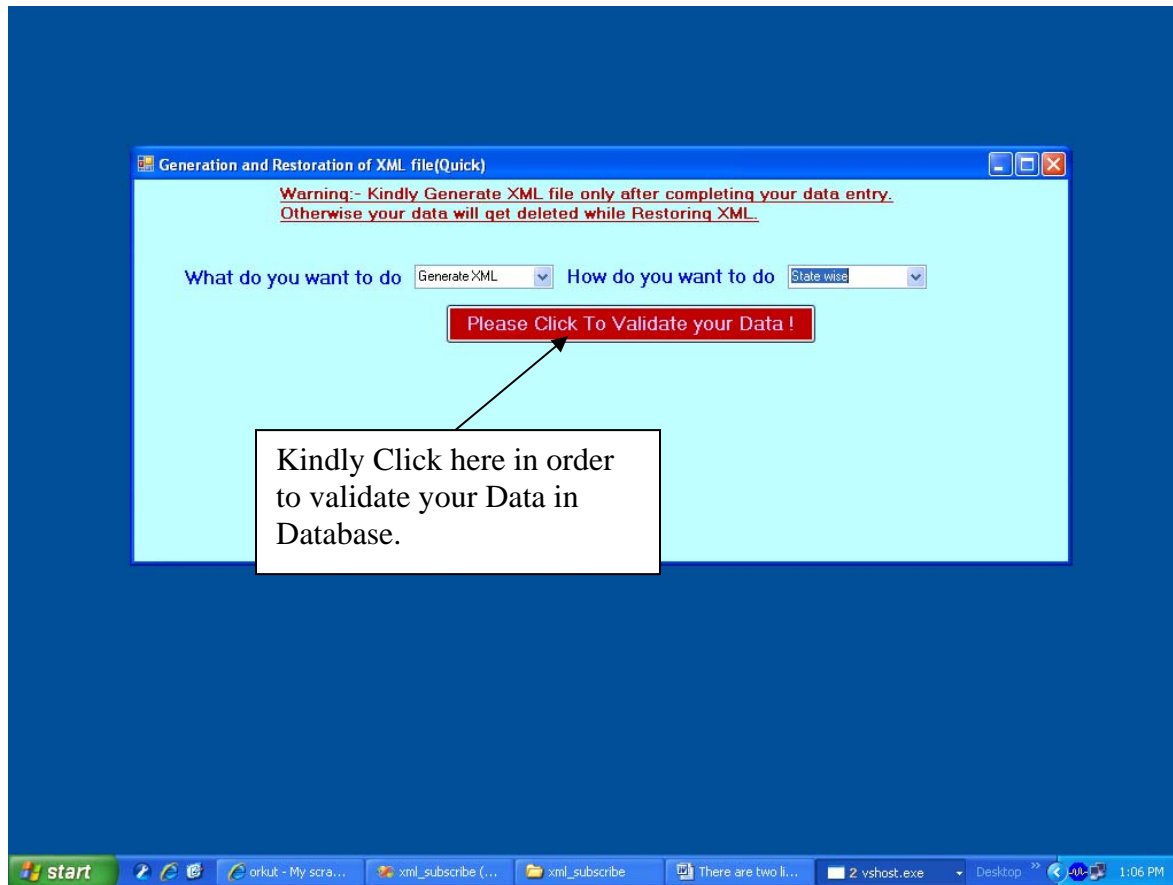
Warning:--

If you will not select any of the options i.e. (State/District/Tahsil/Town Wise) according to your Level then it is difficult to generate Xml files properly. So select any one of the options according to your Level.

Note:- Please follow the above given instruction properly to get Optimum Result.

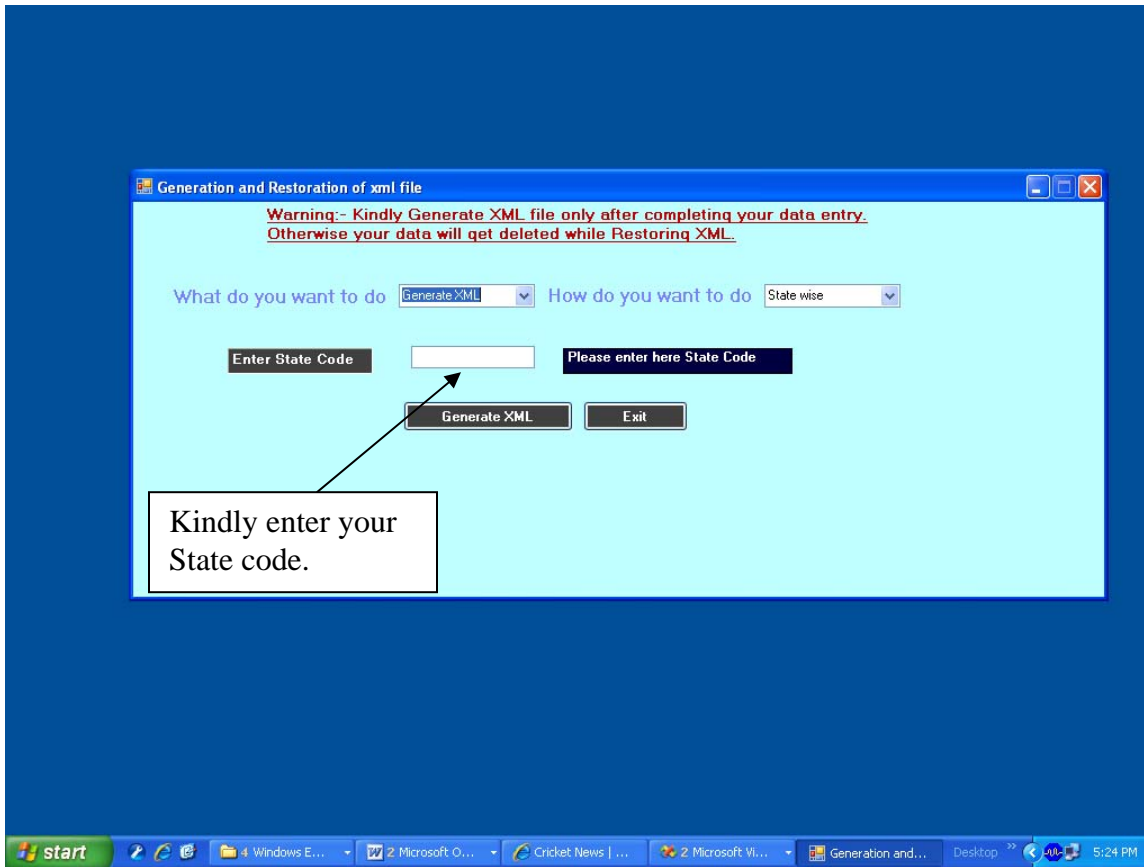
Generating XML:-

5) If you want to generate xml at state level by selecting the option “Generate XML” and “State Wise”, then the following screen will appear:-



In the above screen you find a button with name “**Please click to validate your Data!**”. Click this Button in order to validate your data in the database, After clicking this button, your whole database will be checked and if there is any discrepancy in your data, a message will be displayed regarding the discrepancy and if there is no problem in the data then you will get the screen for “**state wise**” XML generation.

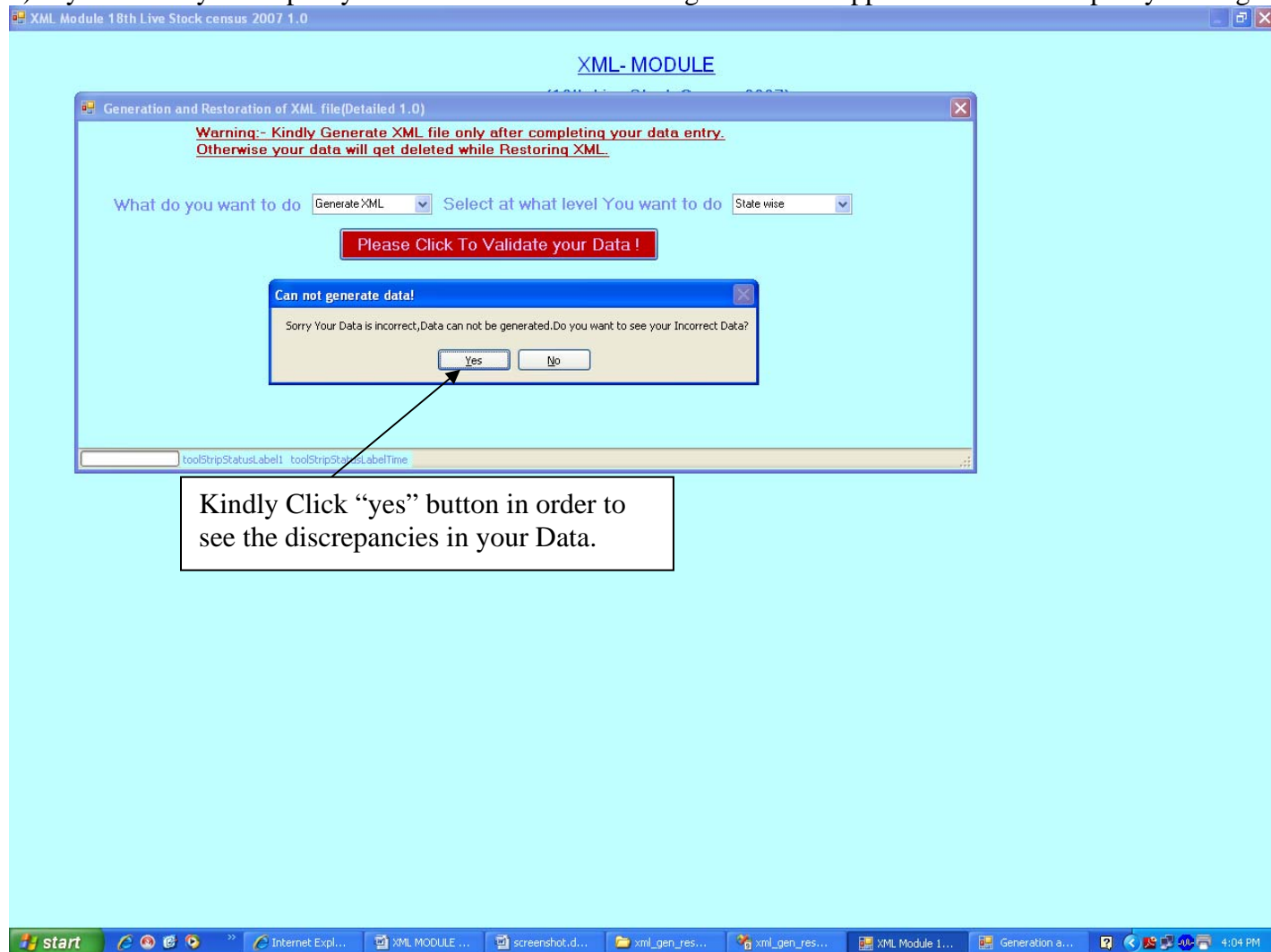
6) The following screen appears, if no discrepancy occurs:



Here enter your state code and click “Generate XML” button

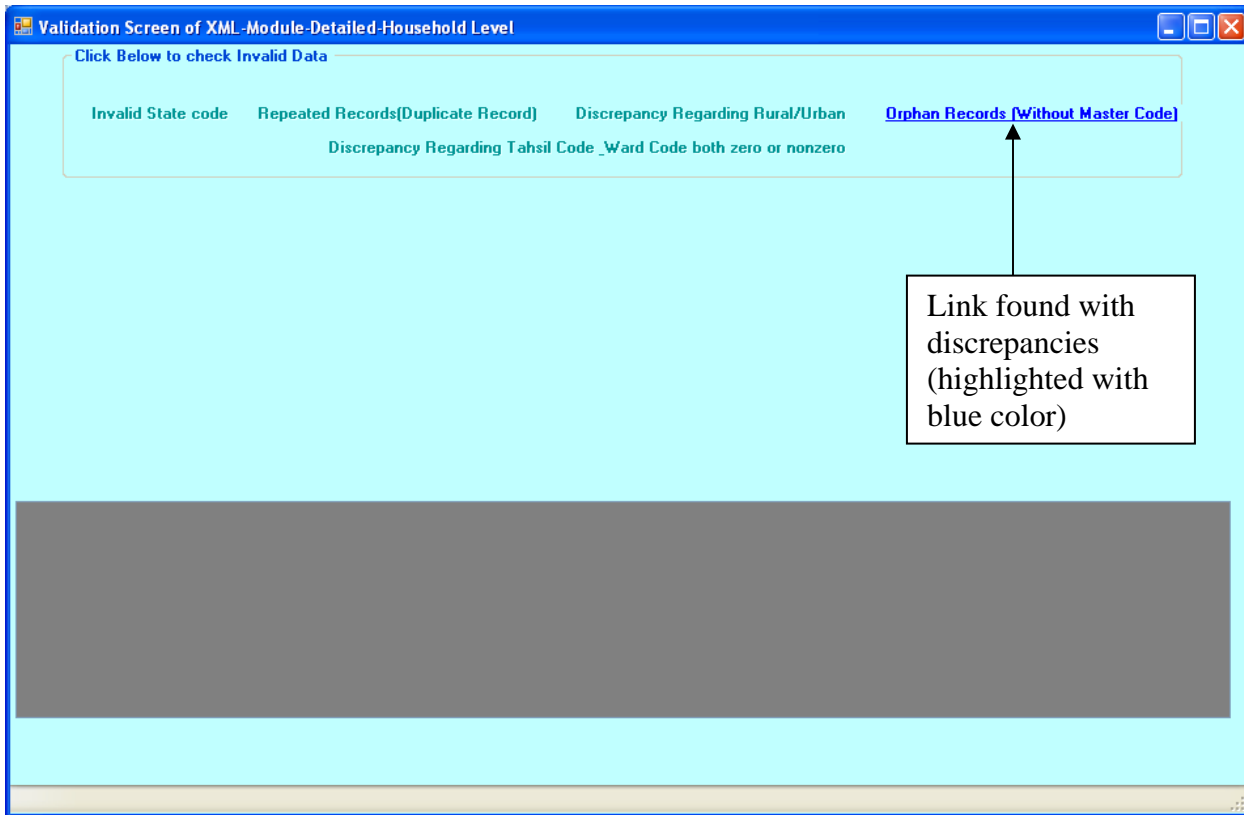
Discrepancy Issues:-

7) If you find any discrepancy in the data then the following screen will appear with the discrepancy message



The Message is **“Sorry your data is Incorrect, Data cannot be generated. Do you want to see your incorrect data”**? Then Click **“Yes”** to see your Data discrepancy otherwise click **“No”** if you don’t want to see your discrepancy or incorrect data entered.

8) If you click “Yes” then the following screen will appear with the total discrepancies that can occur in our data, where the highlighted blue link button shows the discrepancies found in your data. For example in our screen (below), we have discrepancy with “orphan records” (records without master code) only. Now click on this link in order to see the discrepancy.



We have five types of errors (with respective 5 links) that can occur in our data. These are given below:-

- (i)Invalid state Code
- (ii)Repeated Records (Duplicate Records
- (iii)Discrepancy regarding Rural/Urban
- (iv) Orphan Records (Without Master code)
- (v)Discrepancy regarding Tahsil code Ward code either zero or non zero

*** These are discussed below:-**

(ii) **Repeated Records (Duplicate Records):-** If same record exists more than once, then this discrepancy occurs. If this discrepancy occurs, the link “**Repeated Records (Duplicate Records)**” present on the screen, under point”8” above, will get highlighted. In order to see the duplicate records entered in your database, click the above mentioned link. A panel appears with the highlighted species names (those containing repeated records). Then click any of the specie in order to see its duplicate records entered in your database.

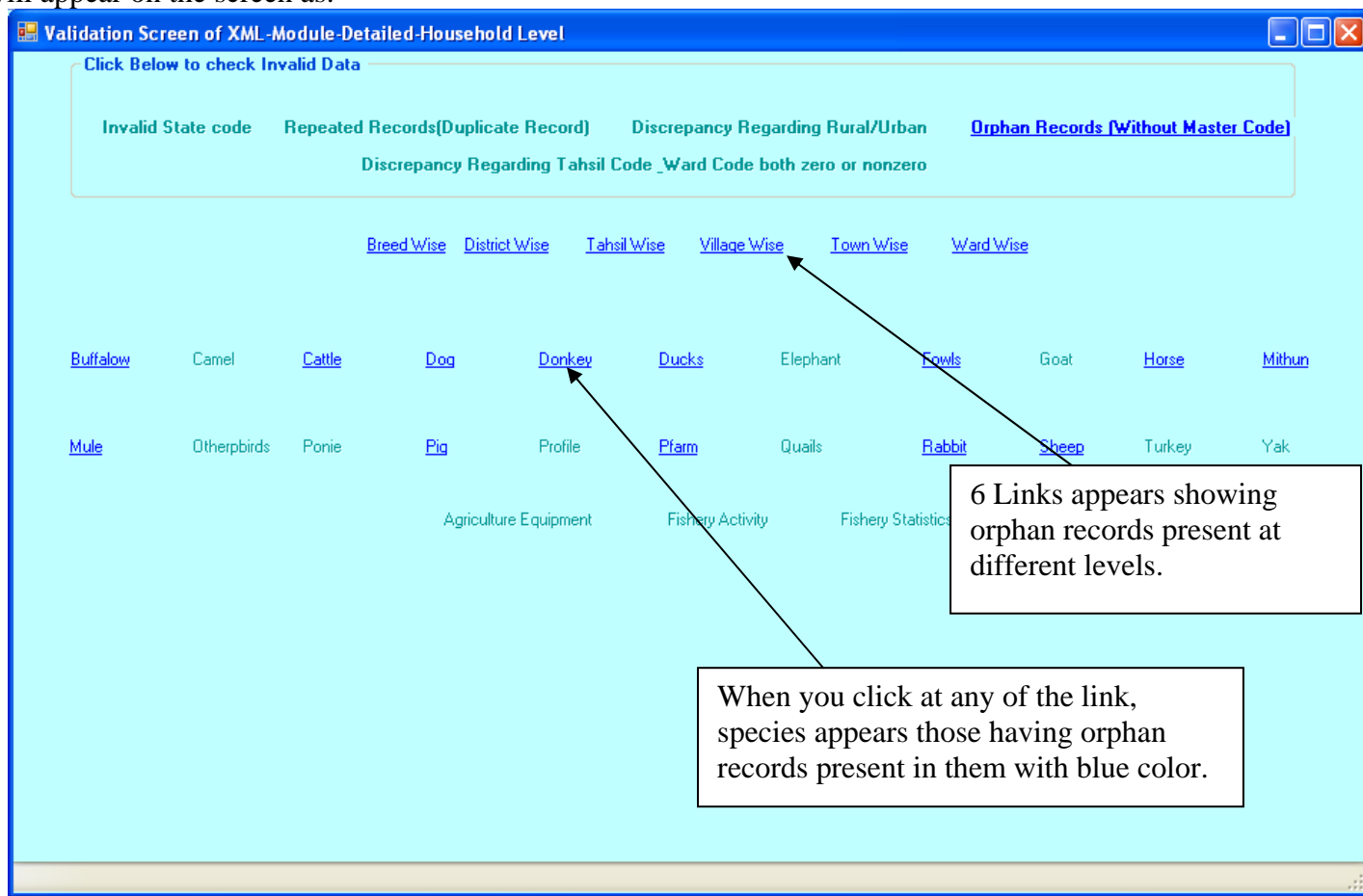
(iii) **Discrepancy regarding Rural/Urban:** - There are two conditions which when violated results in “Discrepancy regarding rural/urban”. The two conditions are:-

(a) **For Rural Record:** - the “**Village code**” must start with “**0**” and must have some value for eg: “01000100”, “**Ward Code**” must be “**0000**” and **tahsil code** must have some value, for eg:”0001”

(b) **For Urban Record:** - the “**Village code**” must start with “**4%**” and must have some value for eg: “40101010” , “**Tahsil code**” must be “**0000**” and “**Ward code**” must have some value for ex: “4321”.

Note: - User must enter records according to the above conditions

(iv) **Orphan Records (Without Master code):-** If records exist in your database in such a way that their master codes are not present in their master files, then this error occurs. If you click this button then **six links** will appear on the screen as:-



The errors at 6 different levels are as follows:-

- **Breed wise:** - This type of error occurs when entered breed code is not valid or correct according to its specie. That means, the breed doesn't exist for that specie. So if any incorrect breed code has entered in your database, then this link highlights with blue color. And if you want to see the specie in which incorrect breed has entered, just click this link, species with invalid breed code appears with blue color.
- **District Wise:** - This error occurs if "District code" is not available in the database for the given "State code". If such error occurs, the link gets highlighted with blue color and if you want to see the specie in which invalid district code has entered, just click this link, species with invalid district code appears with blue color.
- **Tahsil Wise:** - This error occurs if "Tahsil code" is not available in the database for the given "State code" and "District code". If such error occurs, the link gets highlighted with blue color and if you want to see the specie in which invalid district code has entered, just click this link, species with invalid tahsil code appears with blue color.
- **Village Wise:** - This error occurs if "Village code" is not available in the database for the given "State code", "District code" and Tahsil code. If such error occurs, the link gets highlighted with blue color and if you want to see the specie in which invalid village code has entered, just click this link, species with invalid village code appears with blue color.
- **Town Wise:** - This error occurs if "Town code" is not available in the database for the given "State code" and "District code". If such error occurs, the link gets highlighted with blue color and if you want to see the specie in which invalid town code has entered, just click this link, species with invalid town code appears with blue color.
- **Ward Wise:** - This error occurs if "Ward code" is not available in the database for the given "State code", "District code" and "Town code". If such error occurs, the link gets highlighted with blue color and if you want to see the specie in which invalid ward code has entered, just click this link, species with invalid ward code appears with blue color.

Suppose we want to see the 'Orphan Record' discrepancy in cattle. Click on "cattle" link. The invalid records will display in grid format as:-

Click Below to check Invalid Data

Invalid State code Repeated Records(Duplicate Record) Discrepancy Regarding Rural/Urban **Orphan Records (Without Master Code)**
Discrepancy Regarding Tahsil Code _Ward Code both zero or nonzero

Breed Wise District Wise Tahsil Wise Village Wise Town Wise Ward Wise

Buffalow Camel **Cattle** Dog Donkey Ducks Elephant Fowls Goat Horse Mithun

Otherbirds Ponie Pig Profile Pfarm Quails Rabbit Sheep Turkey Yak

Agriculture Equipment Fishery Activity Fishery Statistics

user_nm	sb_code	state_code	dist_code	tahsil_code	village_code	ward_code	HHSno	cm1
admin	0101	07	01	0000	40107000	0025	1011	0
ADMIN	0101	07	01	0000	40107000	0025	1020V	0
admin	0101	07	01	0000	40107000	0025	1021	0
ADMIN	0101	07	01	0000	40107000	0025	1058V	0
admin	0101	07	01	0000	40107000	0025	1091	0
	0101	07	01	0000	40107000	0025	1231	0

Export to Excel

Click Cattle to get the invalid orphan records in it.

The records are shown in the grid format.

Click here to export the data in Excel

* After viewing records, you can export it into excel by clicking the "Export to Excel" button.

The Following Dialog box appears if the excel file with the same discrepancies already exists in C:\ drive.

Microsoft Office Excel

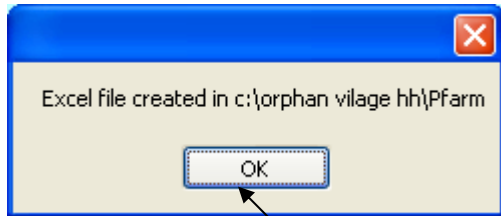
A file named 'C:\orphan village hh\Pfarm.xls' already exists in this location. Do you want to replace it?

Yes **No** Cancel

Click 'Yes' if you want to overwrite that existing file, containing old discrepancies with new one.

Click 'No' if you don't want to overwrite that existing file, containing old discrepancies with new one.

If no such file already exists, the following dialogue box appears:-



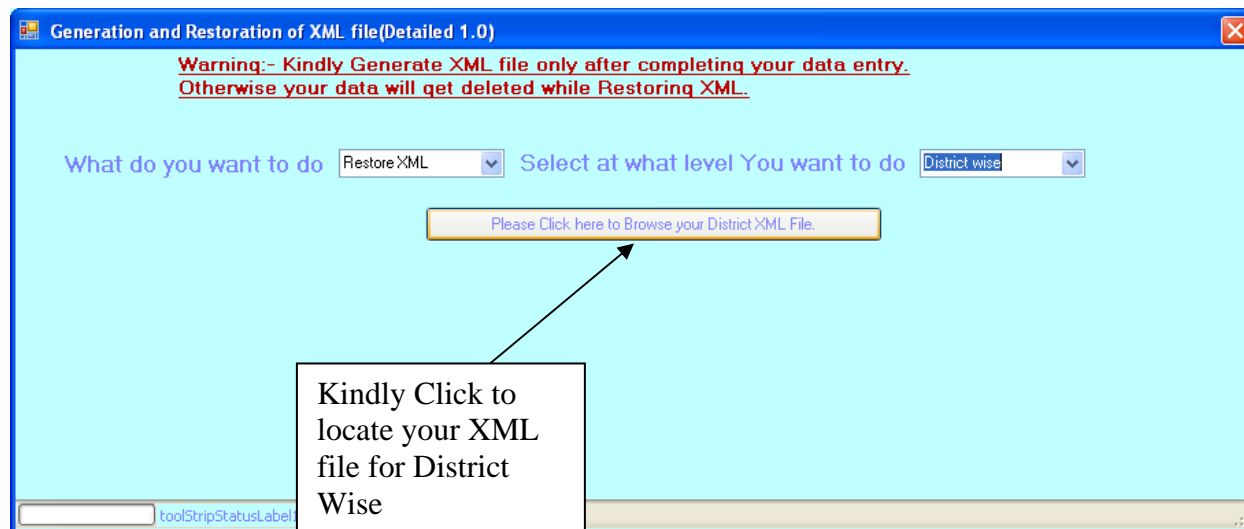
Click here to save you
Excess file in the
specified folder.

(v) **Discrepancy regarding Tahsil code, Ward code both Zero or non Zero:** It will show those invalid records didn't satisfy the following two conditions:-

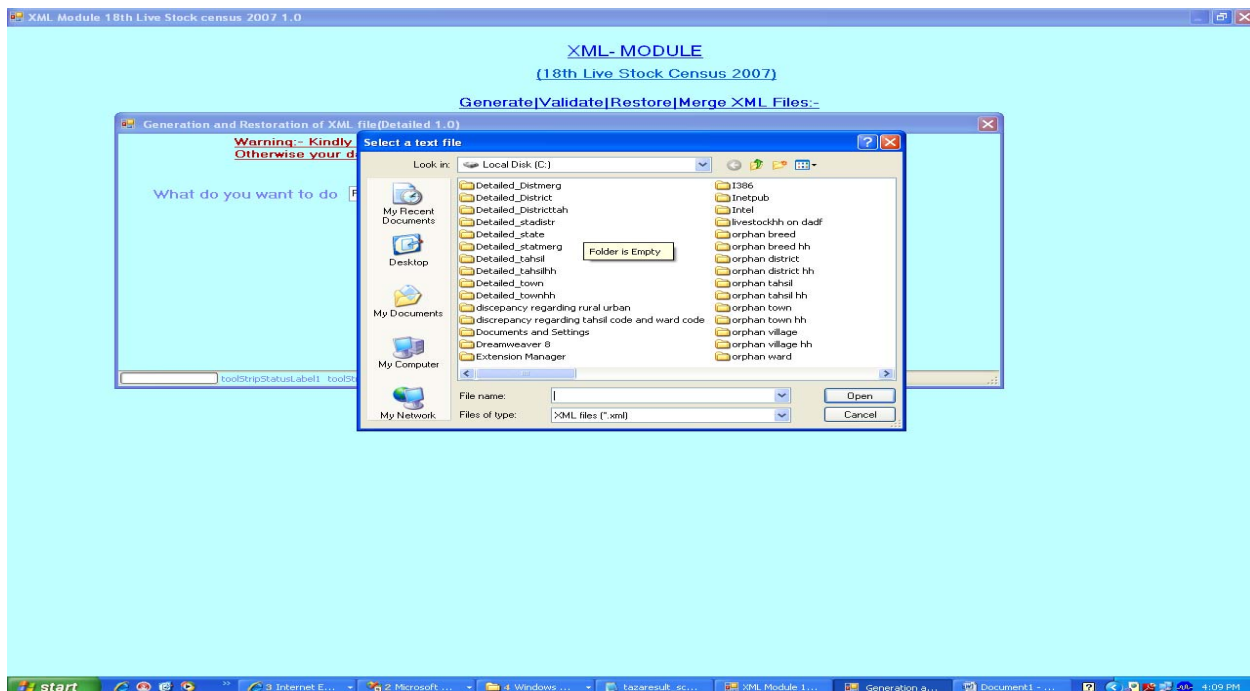
- **For Rural Records:** The tahsil code is of "4 digits", village code is of "8 digits" and should starts from "0" and ward code is "0000".
- **For Urban Records:** The tahsil code is "0000", village code is of "8 digits" and should starts from "4" and ward code is of "4 digits".

Restoring XML:-

(9) Suppose, if you want to restore xml at district level by selecting the option “Restore XML” and “District Wise”, then the following screen will appear:-

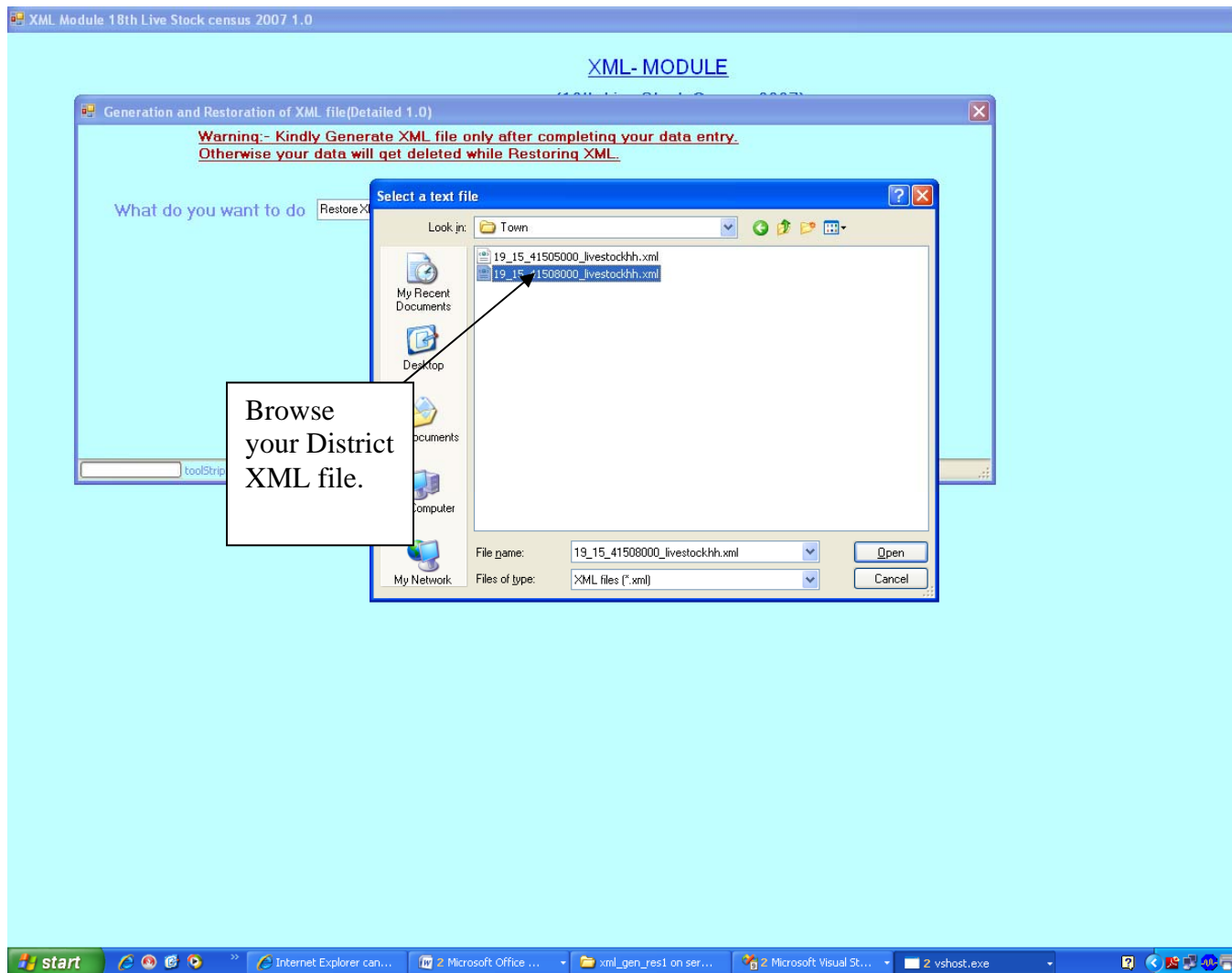


In this form you will find a button named “Please click here to Browse your District XML file”, when you click this button the following screen will appear.....

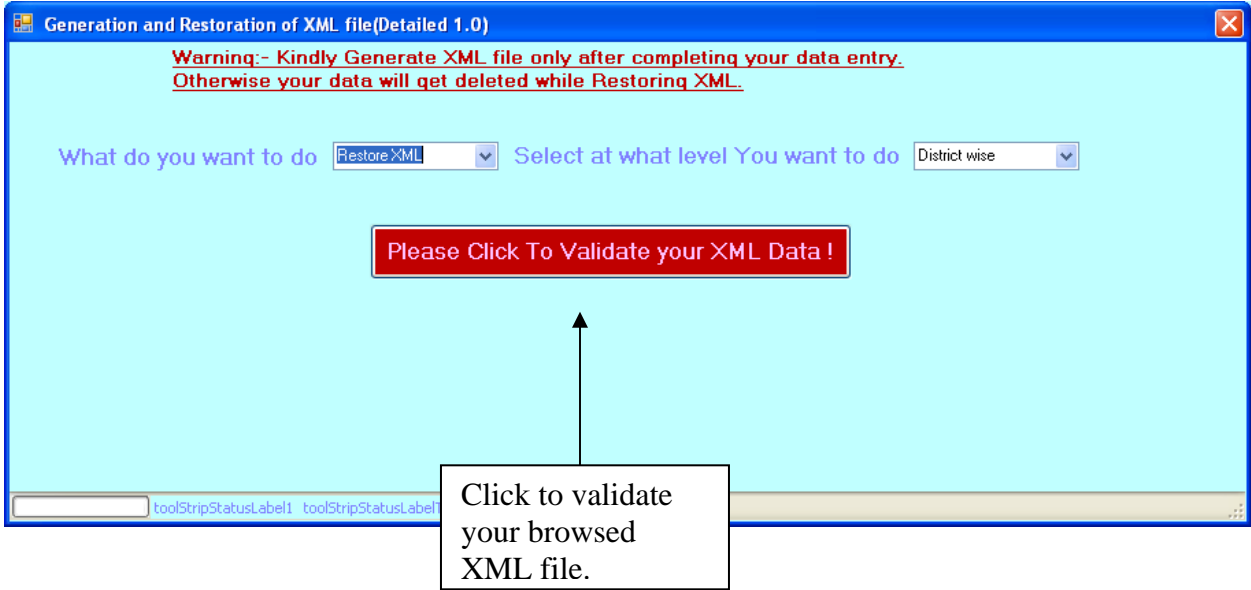


* **The Browser dialogue box will appear**

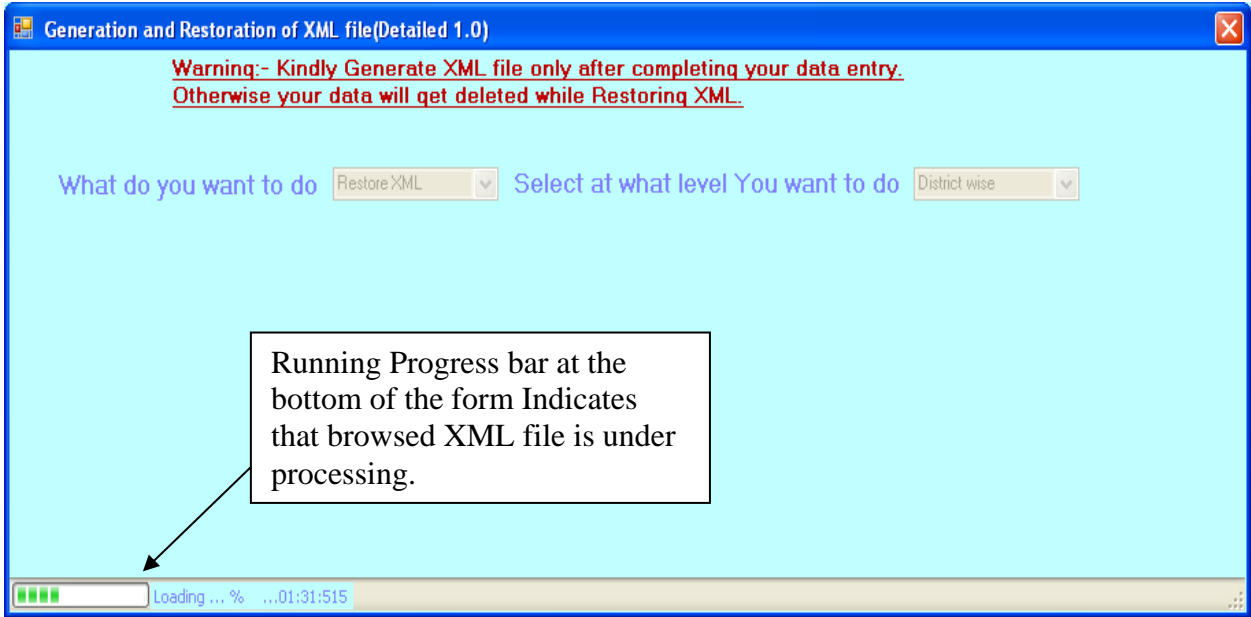
10) Now browse your District file as:-



11) The Following Form will appear after browsing your XML file, now you have to verify your XML file for the discrepancies (invalid records), by clicking the“ Please click to validate your XML data” button.

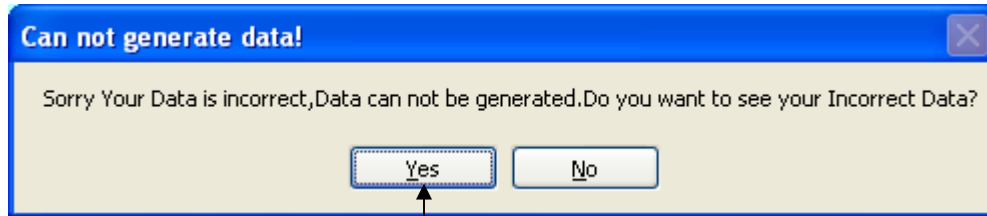


12) The Following Form, the running progress bar shows that the data is under processing



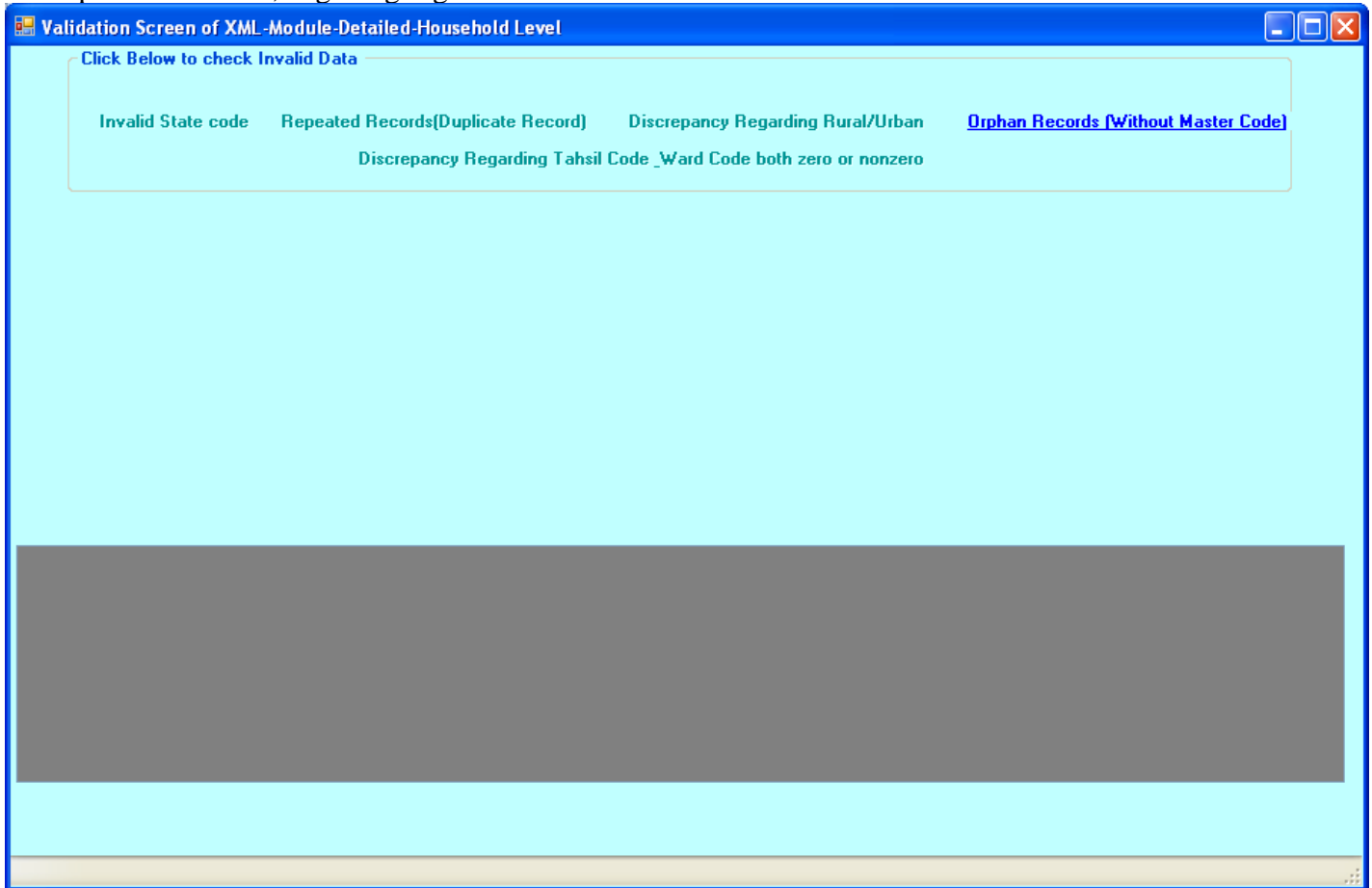
If there is Error then...

13) The following form will appear if there is any data discrepancy in the XML file...



Click yes to see your discrepancies.

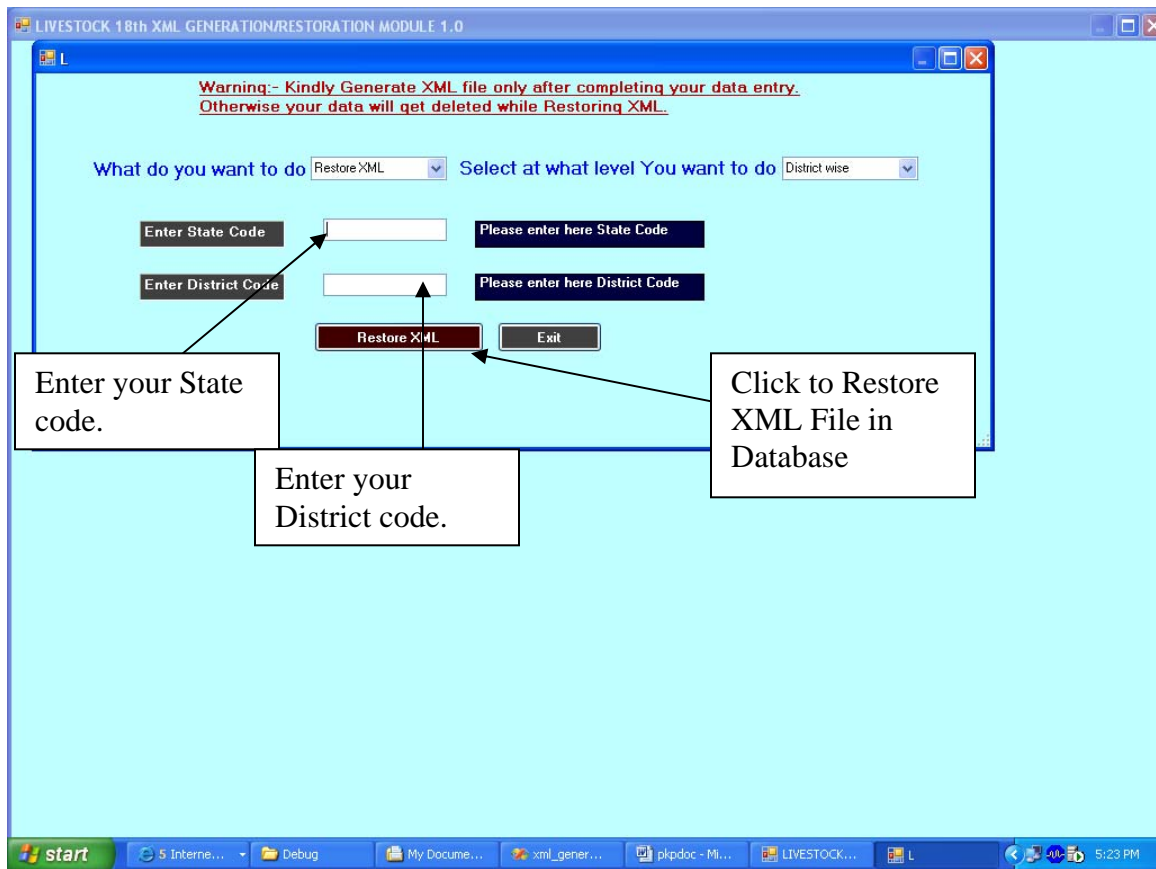
14) When you click 'Yes' button, the following screen will appears with links. Those links which have discrepancies in them, is get highlighted with blue color.



Now follow the "Discrepancy Issue" section which is already described in the above

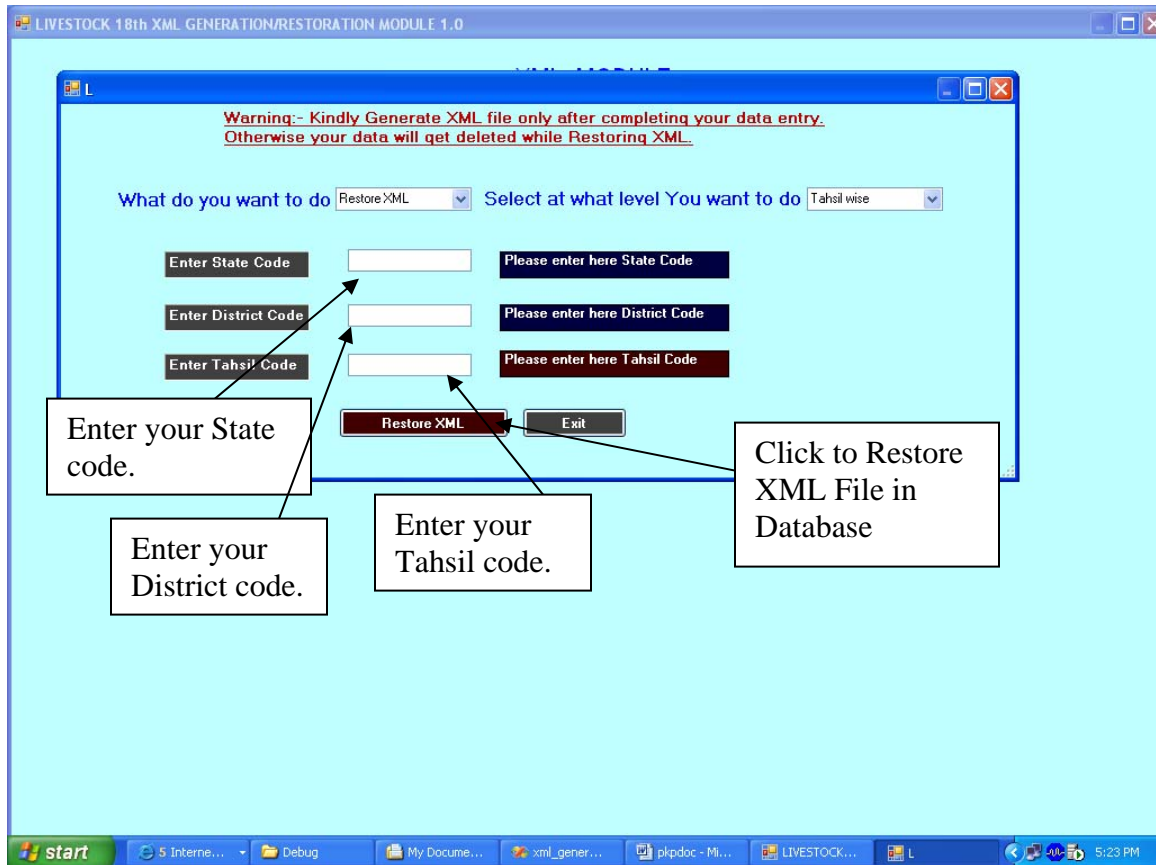
If there is no Error then...

15) The Restoration form will appear. The “District Wise” restoration form is as below:



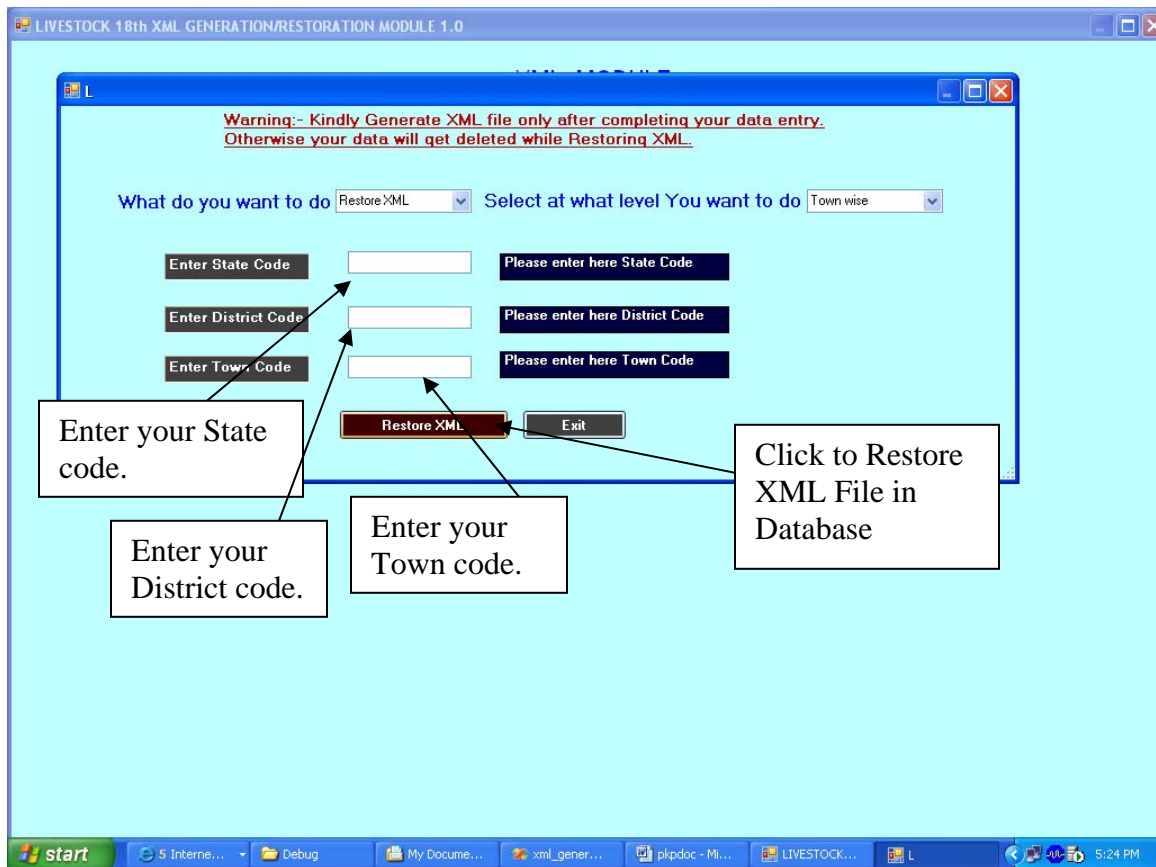
Here enter your state code and district code and then click the “Restore XML” button in order to restore the Xml file.

16) Similarly for “Tahsil wise” following screen will come:-



Here enter the state code, district code and respective tahsil code and then click the “Restore XML” button.

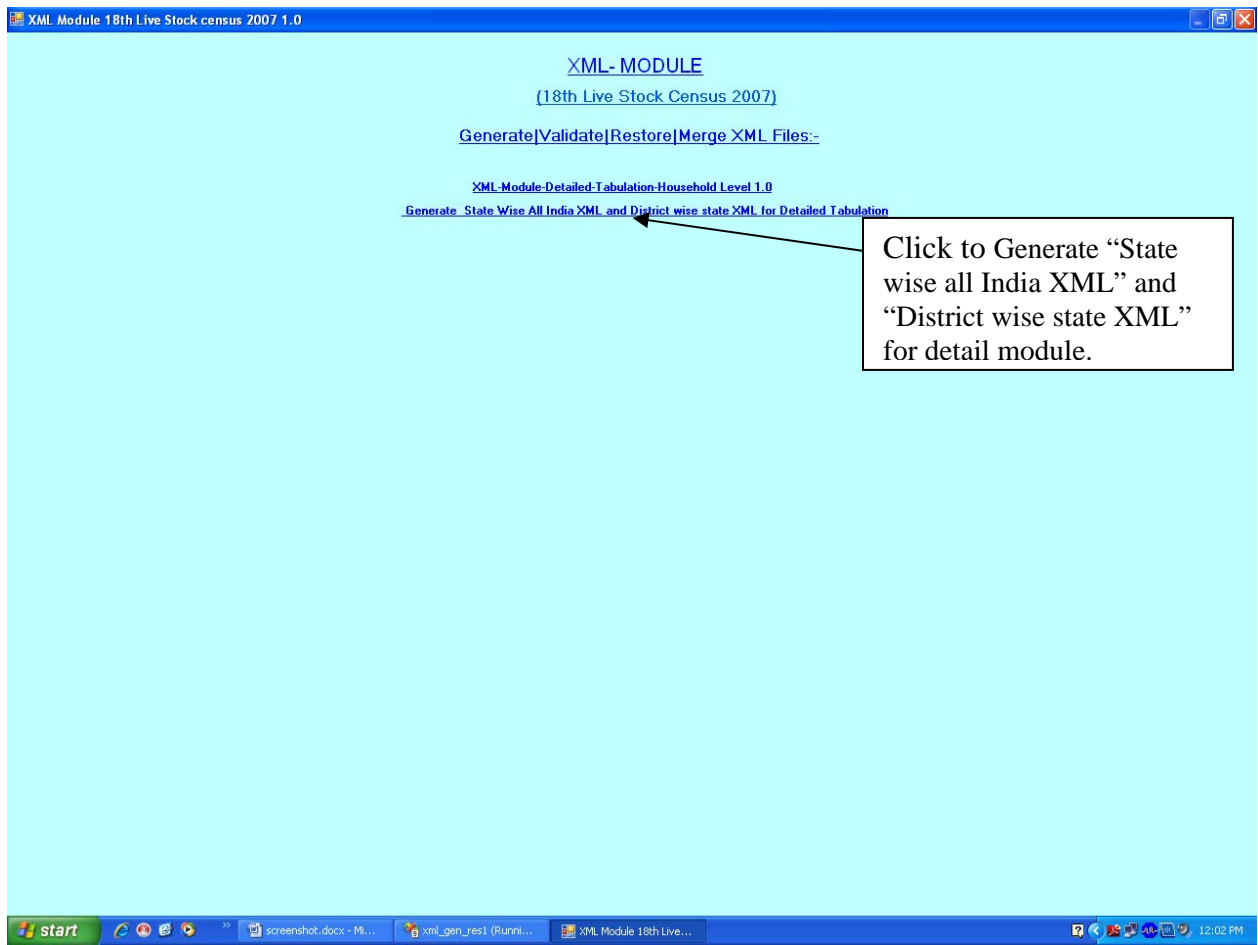
17) Similarly following screen will appear for the town wise restoration:-



Here enter your state code, district code and town code and then click the “Restore xml” button and your data will be restored in your database.

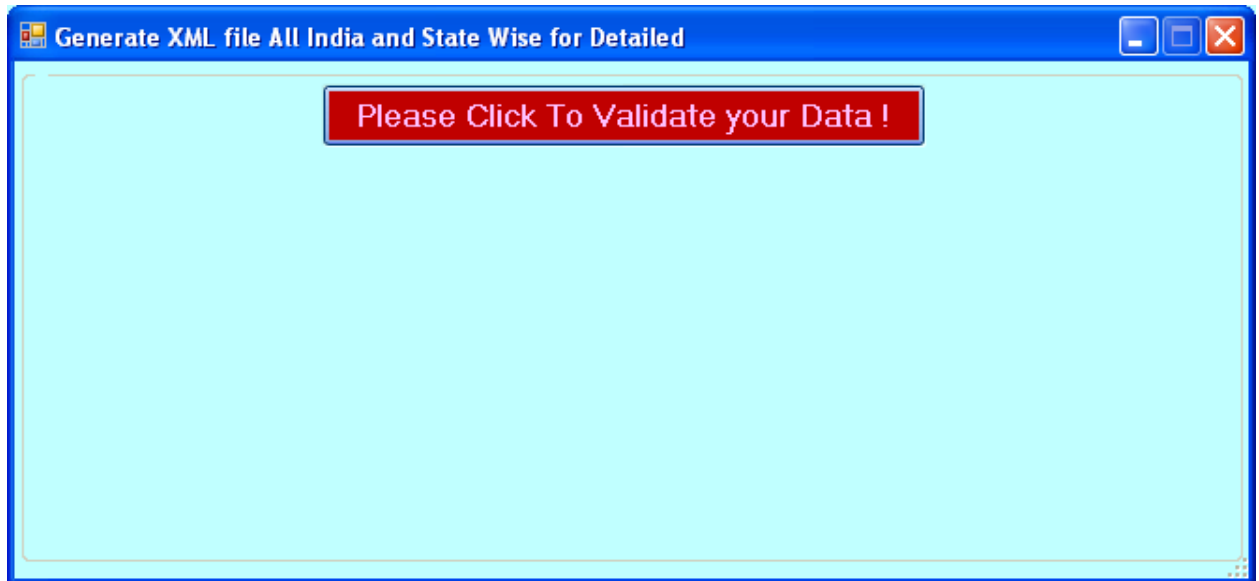
**Generating “state wise all India
XML” and “district wise state XML”
For Detail Module**

(1) In order to generate “State wise all India XML” and “District wise state XML” for detail module click on the second link named “Generate state wise All India XML and District wise state XML for detailed Tabulation” on the first screen as:-



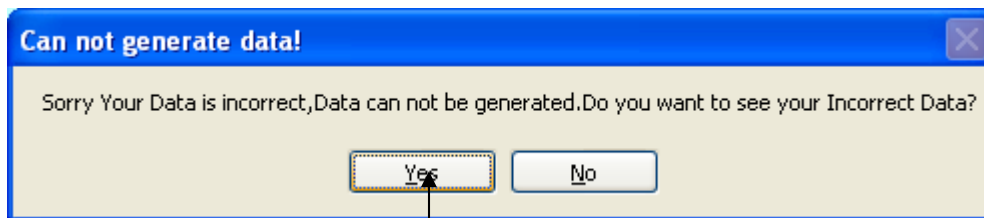
The following form will appear....

(2) In this form click the “**Please click to validate your data**” button in order to check if any discrepancy occurs in your data or not.



If there is Error then...

(3) The following dialog box will appear if there is data discrepancy in the XML file...



Click to watch the data discrepancy.

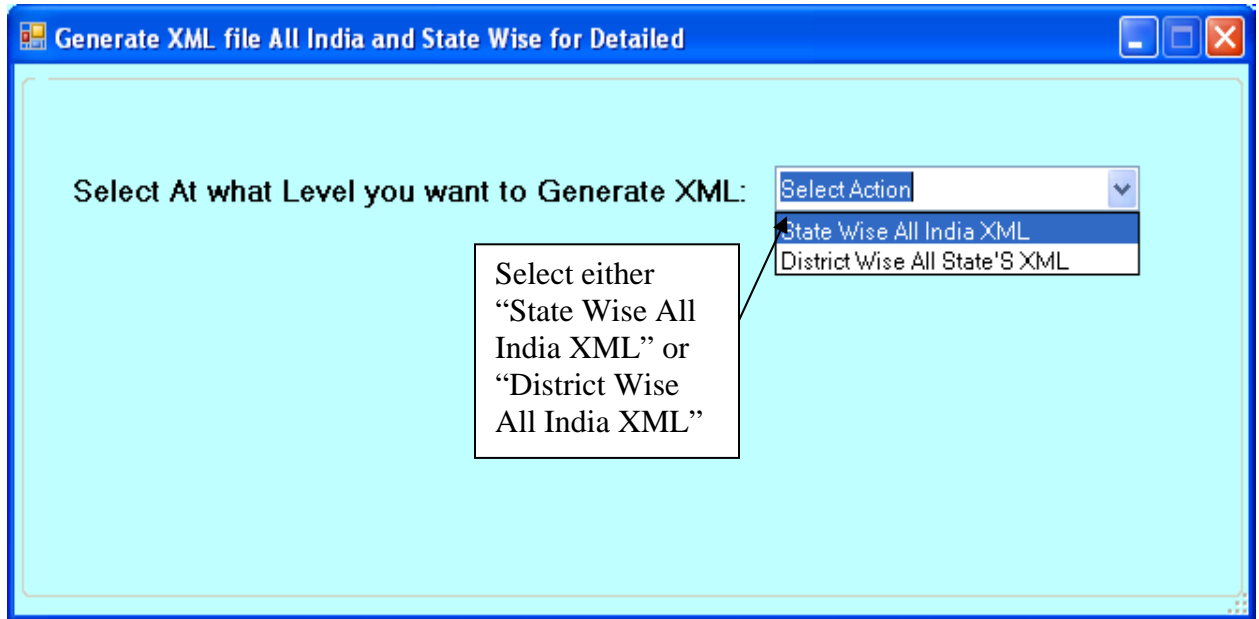
(4) When you click “Yes” button, the following form will appear with Highlighted blue link button



- Now follow the “Discrepancy Issue” section which is already described in the above section.....

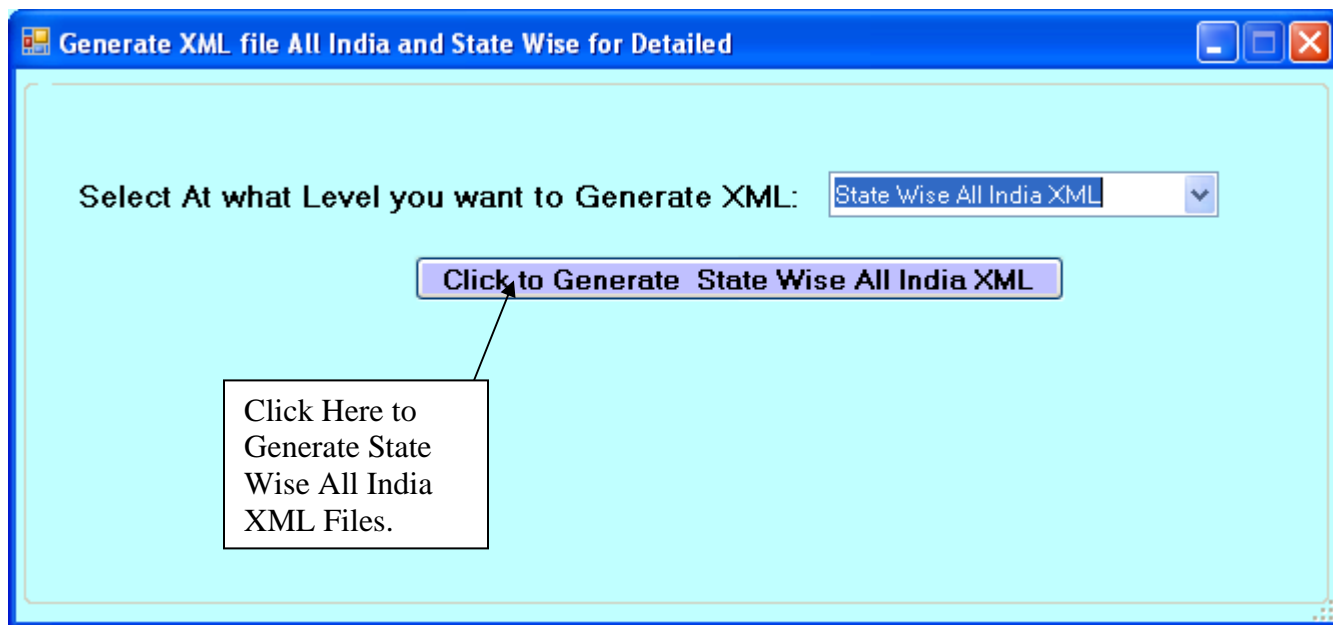
If there is no Error then...

(5) The following form will appear. Select An Appropriate Action for Generating XML either “State Wise All India XML” or “District Wise All India XML”.....



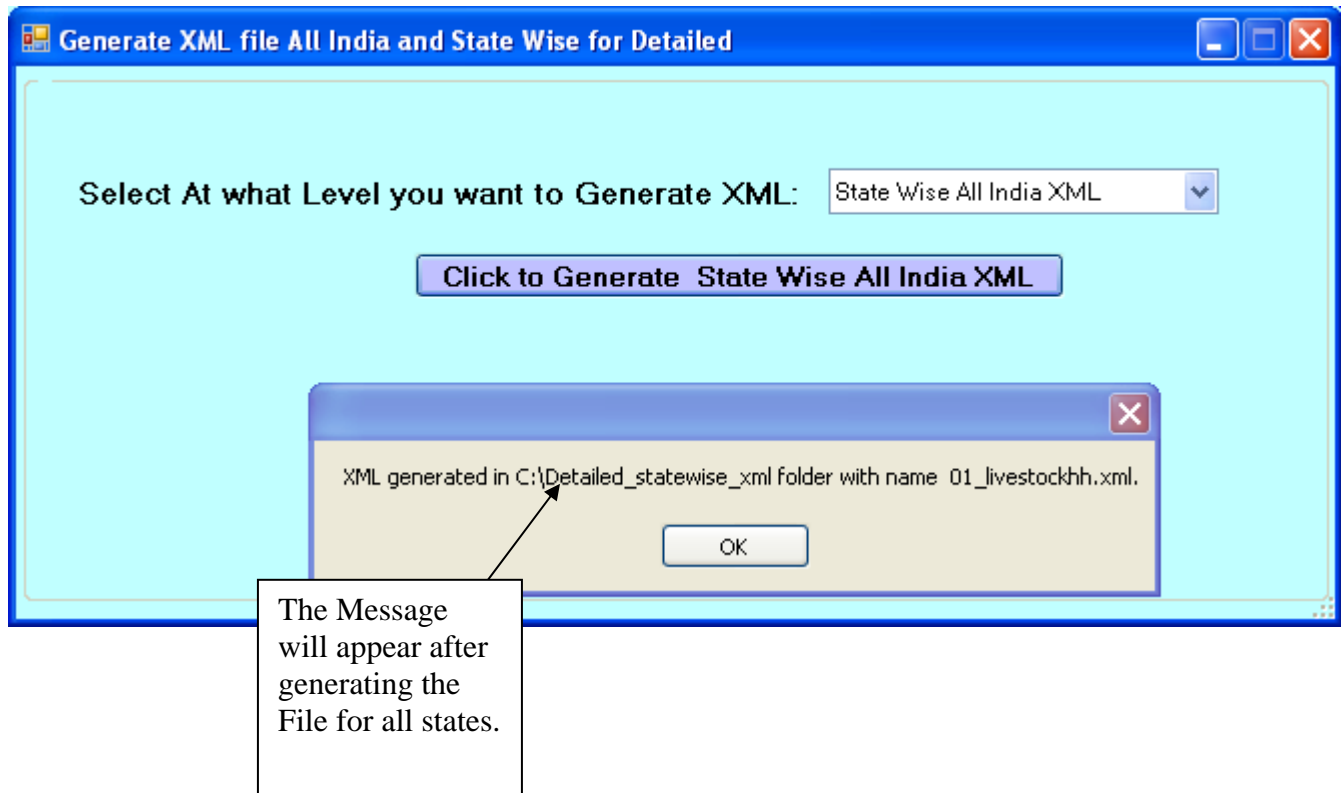
- Click “State Wise All India XML” - to Generate XML of All India (for all 35 states) at one click.
- Click “District Wise All State’s XML” - to Generate XML for All districts present in a particular state

(6) After selecting “State wise all India XML” the following screen will appear....



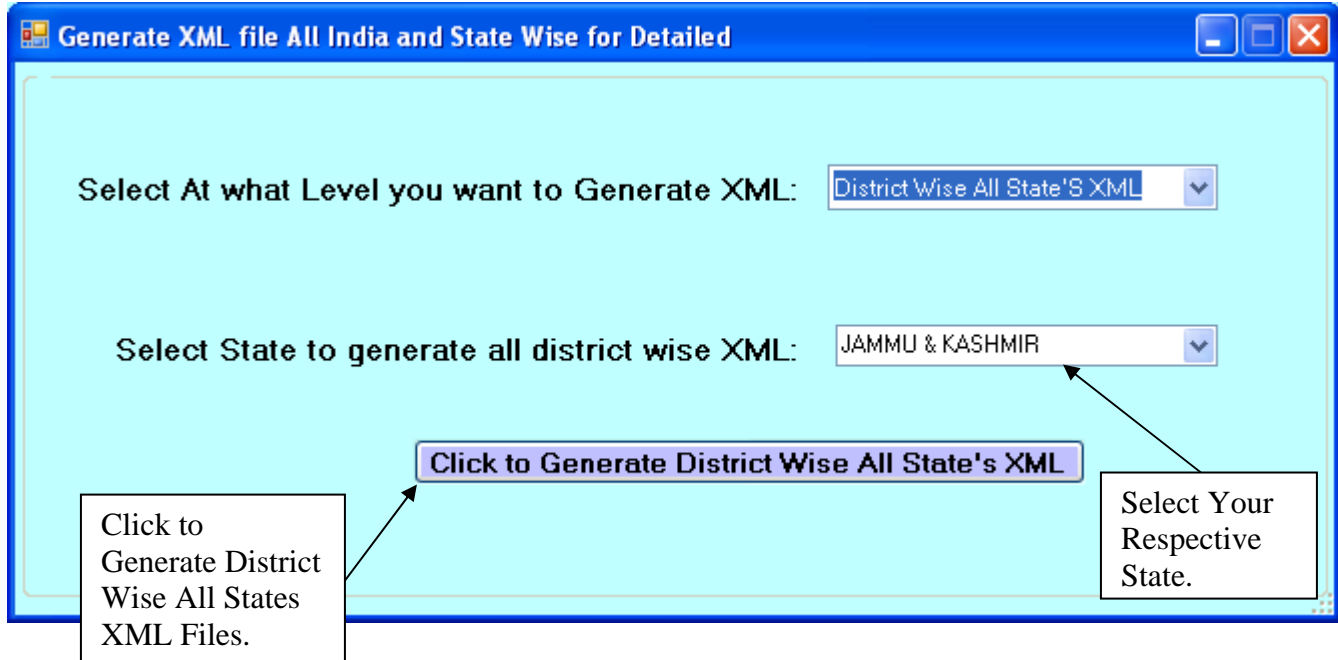
- After Selecting “State Wise All India XML” Option, the button with Name “Click to Generate State Wise All India XML” will appear. Click this Button to Generate the XML files for “All States”

(7) The Message will appear after generating the XML File for all states



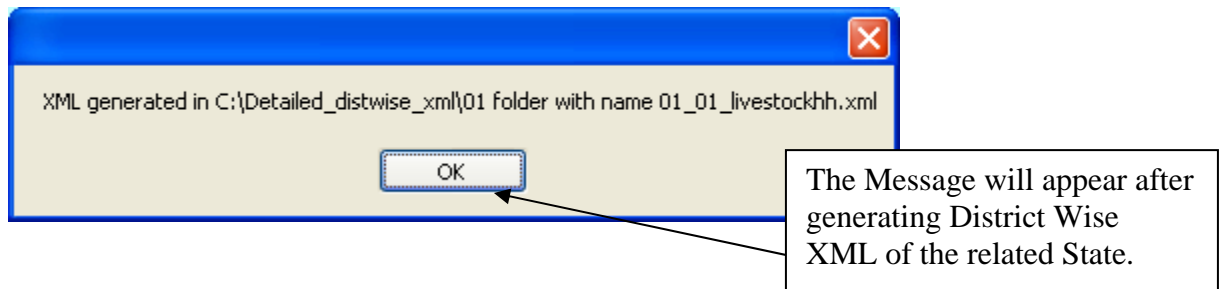
The Xml file will be generated in the folder “C:\Detailed_statewise_xml” with the file name respective to the State code. For example, Jammu & Kashmir file will be generated with name “01_livestock.XML”.

(8) After selecting “District Wise state XML” the following form will appear....



- If we select “District Wise all States XML” and then select any State then a button will appear with Name “Click to Generate District Wise All States XML File”. Click it to Generate XML for all Districts, for the selected State.

(9) The Message will appear after generating District Wise XML of the related State.....



- The Message will appear after generating every district wise XML for related State.
- According to message, a parent folder with name “Detailed_distwise_xml” is created in C:\ drive. Then a subfolder will create with the code of the state you have selected, to generate XML for. For example, if you select Jammu & Kashmir, then the subfolder will create with “01” name, then XML files for all the districts present in Jammu & Kashmir will be created with name as :-
 - (a)“01_01_livestock.XML”- for “01” district in “01” state
 - (b)“01_02_livestock.XML” – for “02” district in “01” state.Similarly all xml files will be created for all the districts present in Jammu & Kashmir.

Note: - Similarly you can create xml files for all the districts present in all other states.